

Teenagers & Alcohol



5000 youth today

...under the age of 16 take their first drink of alcohol.*

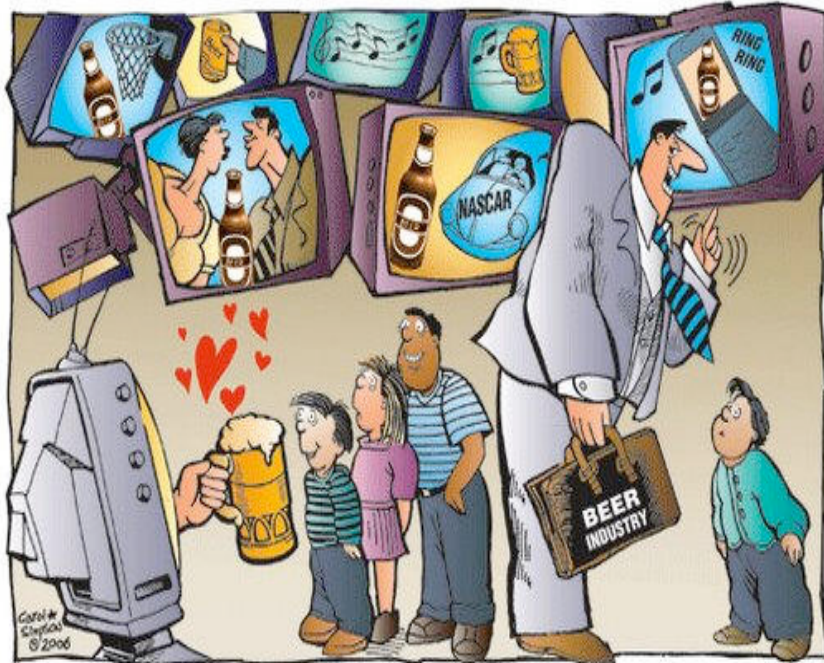
**Monitoring the Future Survey, 2009*



1 death per week
in Mississippi.

Over a 10 year period in Mississippi...688 deaths were caused by underage drunk drivers.*

**MS Dept. of Public Safety data, 2005.*



"Now, kids, don't look until you're twenty-one."

www.GetSerious.org

12-20% of the alcohol market is consumed by youth under 21. This represents **3.6 BILLION** drinks a year.*

*Monitoring the Future Survey, 2009



185 drivers

In 2003 in Mississippi 185 drivers under the age of 21 were involved in fatal crashes.*

*MS Dept. of Public Safety data, 2004.



Nose bitten off during binge drinking.

1 of every 4 students: 25.2% of 12th grade students reported drinking 5 or more drinks in a row (binge drinking) during the previous 2 weeks.*

**Monitoring the Future Survey, 2009*

The amount of money spent on underage drinking in Mississippi was...

1 Million Dollars - No

5 Million Dollars - No

50 Million Dollars - No

552 Million Dollars – Yes

“An ounce of prevention is worth a pound of cure.”

Invest in prevention; it works!

552 million was spent on underage drinking in Mississippi. This includes costs related to violence, traffic crashes, crime, injuries, and treatment. *

**Underage Drinking in MS: The Facts, Pacific Institute for Research & Evaluation, Nov. 2009.*



Driver intoxicated, and going 120 mph and slammed into the back of a pick-up truck. Car occupants (4). Driver killed instantly, passenger behind driver died of head injuries 4 days later, front passenger walked away from the accident and the other rear passenger, minor bruises. In the words of one of the eye witnesses and friends of the people in the car..., "Let me tell you something, after what I have seen there, being there myself and seeing the aftermath....being a heavy-footed driver I no longer have the urge to fly, and no more drinking and driving, and I'm talking not even a sip (for me drinking and driving is actually a little sip of beer)."



Father, 15 & 12 year old daughters, completely stopped at a 4-way intersection. They were rear-ended by a drunk driver who was going 80 mph when he hit them. The driver's blood alcohol level (BAC) was 2.8. (0.8 is legally drunk). In the words of the father and his 2 daughters who survived the crash, "Luckily we are alive and are now huge advocates for the fight to get drunk drivers off the roads!"

371 deaths = 40%

In 2005, 371 people in MS died in alcohol related motor vehicle crashes = 40% of all traffic related deaths.*

**MS Dept. of Public Safety, 2005*

| | |
|--|--|
| | |
|--|--|